

New Brunswick

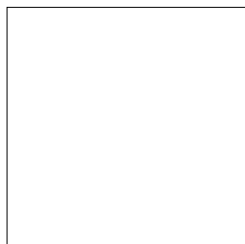
Pence Issue
1851 Engraved. Blue Paper
Imperforate

3d red



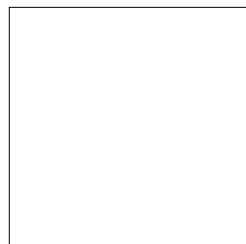
1

3d dark red



1a

3d dark red
Watermarked



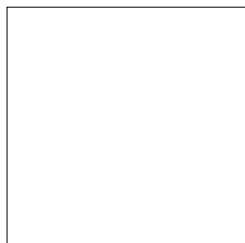
1i

6d olive yellow



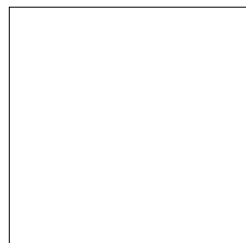
2

6d orange yellow



2a

6d mustard yellow



2d

1sh bright red violet



3

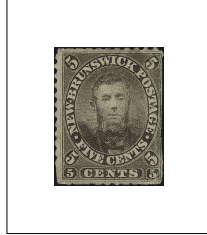
1sh dull violet



4

New Brunswick

Charles Connell
5c brown



5

This stamp was never issued. Postmaster Charles Connell decided to use his portrait on the most commonly used stamp rather than Queen Victoria. No. 8 was issued in its place.

1860 Cents Issue, Perf 12

Locomotive



6

Steamship



10



7



8



9



11

On July 1, 1867 New Brunswick joined the Dominion of Canada.